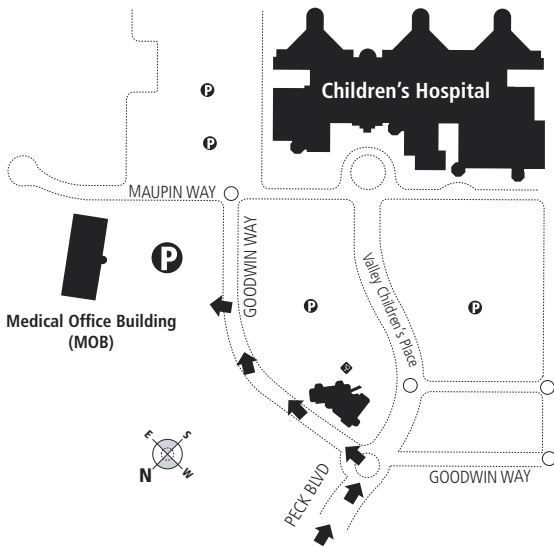


[www.childrenscentralcal.org](http://www.childrenscentralcal.org)

9300 Valley Children's Place

Madera, CA 93636-8762

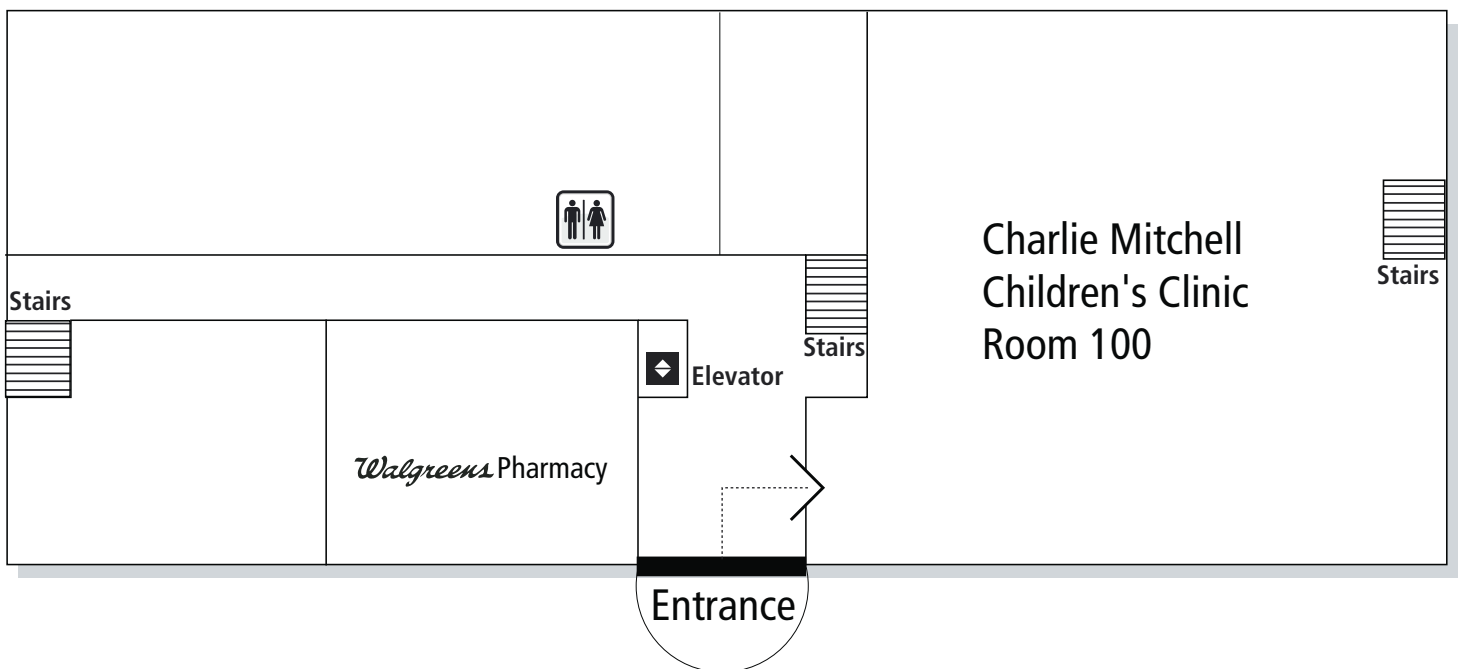
Clinic Phone: **(559) 353-6425**



**This is the Medical Office Building (MOB).**

**Go to the Medical Office Building (MOB) located north-east of the Hospital. It is on your left as you drive in.**

**1** Your appointment is on the First Floor



Enter the Medical Office Building (MOB) through the main entrance. The Charlie Mitchell Clinic is on your immediate right.